

# CITIZEN

## Fast, easy and reliable

High speed printing with unique ease of use



**CT-S801III**  
(available in black or white)

**LCD display**  
The industry's first POS printer with LCD display for easy configuration and operation. Many set up options and coloured status or error messages.

**In a hurry?**  
With 300mm/sec. print speed the CT-S801III is the fastest POS printer in the market.

**Toolfree maintenance**  
Paper jam? No problem for the CT-S801III. One hand grip and the cutter is released automatically. No tool is needed. Even if the long-life cutter ever needs to be exchanged. Thanks to it's Snap-In design this only takes 30 seconds.

**Internal Power Supply**  
The CT-S801III POS printer from Citizen offers an internal power supply.

# CITIZEN CT-S801III POS

### Applications

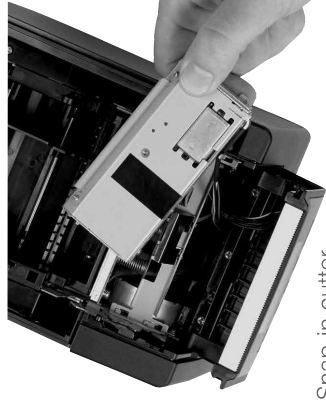
- Receipt
- Coupon
- Ticket
- Daily Report
- Kitchen management
- Delivery slip
- Barcode
- Weigh scales
- Kiosk
- Queue management



Online status



Error message with instruction



Snap-in cutter

# CITIZEN

## Accessories/ Interface Connections

- Serial IF1-RS01
- Parallel IF1-PA01
- USB IF1-UB01
- Ethernet (Standard) IF1-ET01
- Powered USB IF1-PU01

## Specifications

| Model                        | CT-S8011I   |
|------------------------------|---|
| Printing method              | Line thermal dot printing   |
| Printing width               | 280mm/640 dots, 72mm/576 dots, 64mm/512 dots, 54.5mm/436 dots, 54mm/432 dots, 52.5mm/420 dots, 48mm/384 dots, 45mm/360 dots, 48.75mm/390 dots, 66.25mm/546 dots   |
| Dot pitch                    | 8 x 8 dots/mm (203 dpi)   |
| Printing speed               | Max. 300mm/s (print density 100%), 2400 dot-lines/s   |
| Number of columns            | 83mm paper: Font A - 53, Font B - 71, Font C - 80, 80mm paper: Font A - 48, Font B - 64, Font C - 72, 60mm paper: Font A - 36, Font B - 48, Font C - 54, 58mm paper: Font A - 35, Font B - 46, Font C - 52  |
| Character size               | Font A: 1.50 x 3.00mm (12 x 24 dots), Font B: 1.13 x 2.13mm (9 x 17 dots), Font C: 1.00 x 2.00mm (8 x 16 dots)  |
| Character table              | Alphanumeric, international, PC437/850/852/857/858/860/863/864/865/866/ WPC1252/katakana/Thai code 18   |
| Barcode type                 | UPC-A/E, JAN-1/3/8, Code 39, Code 128, CODABAR, Code 93, PDF417, QR Code  |
| Logo registration/print      | 384 KB (capable of storing user-defined characters and logos)   |
| Line spacing                 | 4.23mm (1/6 inch), can be set by command  |
|                              | 83mm/80mm/60mm/58mm (all +0/-1mm)   |
|                              | maximum 83mm  |
| Paper                        | 65-75µm (core tube diameter: inner 12mm/outer 18mm)<br>75-150µm (core tube diameter: inner 25.4mm/outer 32mm)<br>TF-50KS-E-2D from Nippon Paper, PD150R or PD160R from Ohji Paper, PA220AG, HP220A, HP220AB-1, F230AA, P220AB, or PB670 (2-color paper) from Mitsubishi Paper |
| Interface                    | Serial (RS-232C compliant), parallel (IEEE 1284 compliant), USB, USB with hub, Ethernet, Wireless LAN (Wifi), powered USB, Bluetooth  |
| Input buffer                 | 4K bytes/45 bytes   |
| Drawer kick-out              | 2 drawers   |
| External device port         | RJ-45, 8-pin connector  |
| Liquid crystal display (LCD) | 128 x 32 dots STN liquid crystal, white/red LED backlight   |
| Power supply                 | Input: AC 100 to 240V, 50/60 Hz, 150 VA, Output: DC 24, 2.1 A   |
| Weight                       | CT-S8011IS: Approx. 2 kg, CT-S8011IA: Approx. 1.6 kg  |
| Dimensions (W x D x H)       | CT-S8011IS: 145 x 192 x 148 mm, CT-S8011IA: 145 (W) x 192 (D) x 120 (H) mm  |
| Operating environment        | 5 to 45°C, 10 to 90% RH (no condensation)   |
| Storage environment          | -20 to 60°C, 10 to 90% RH (no condensation)   |
| Reliability                  | Print head life: 150km, 200 million pulses (at normal temperature and humidity using recommended paper), Auto cutter life: 2 million cuts (at normal temperature/humidity, using recommended paper and paper thickness)   |
| EMC and safety standards     | UL, C-UL, FCC Class A, TUV-Bauart, CE Marking, VCCI, CCC, BIS   |
| Warranty                     | 2 years for Printer   |

All product names are trademarks of the respective manufacturers. Epson® and ESCO/POS™ are trademarks or registered trademarks of Seiko Epson Corporation. Designs, specifications and availability are subject to change without notice. Errors and omissions excluded.

### Type Classification

CT-S8011IS 3 RS E BK P L M1

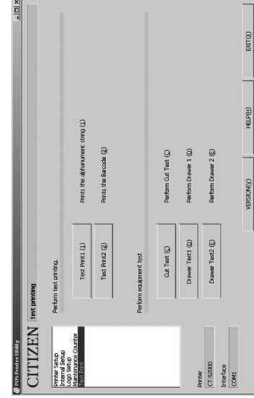
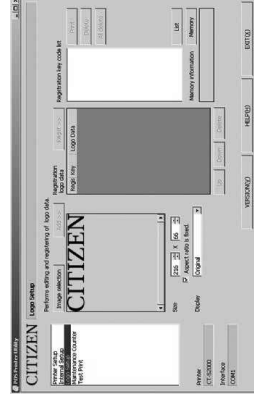
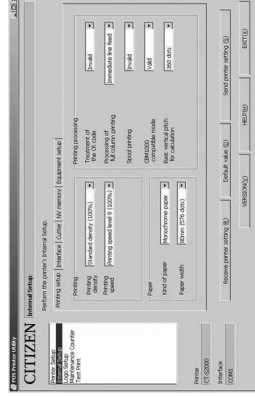
1) 2) 3) 4) 5) 6) 7) 8) 9)

- Model type**  
CT-S8011I
- Power supply**  
DC: No power source  
S: Built-in power supply type  
A: AC adapter type
- Paper width**  
3: 3 inch (80/83 mm)  
2: 2 inch (58/60 mm)
- Body case color**  
WH: White  
BK: Black  
UR: North America  
GR: Gray  
C: China
- Market:**  
J: Japanese  
E: Europe/Asia  
U: North America  
C: China
- PNE sensor**  
No  
P: PNE sensor
- Interface**  
BT: iOS & Android / Bluetooth  
ET: Ethernet (Compact type)  
ES: Ethernet (Premium type)  
RS: Serial RS-232C  
UP: Powered USB  
UH: USB with hub  
WF: Wireless LAN (Compact type)
- Label**  
No  
M1: Left side  
M2: Right side



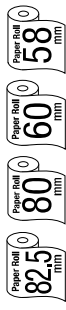
Exchangeable interfaces plus RJ-45 port

## Customization Software



# CITIZEN CT-S8011I

## POS



## Features & Benefits

- 300mm / sec high-speed printing
- 82.5/80/58 mm selectable paper width
- Easy paper loading
- Auto retracting Cutter (full/partial)
- Snap-in cutter
- LCD display
- Built-in buzzer
- Top paper exit
- Paper roll capacity Ø 83mm
- Exchangeable interface cards
- RJ-45 port
- Built-in AC adaptor
- Cash drawer kick-out
- Bitmap registration (NV memory)
- Barcode printing
- ESC/POS compatibility
- Page mode
- Two color printing
- Smoothing fonts
- Available in white, black or dark grey (option)
- Driver: Win2000/XP/Vista/2003 Server, OPOS, Java POS, CUPS
- Utility software: Printer customization software, Receipt Layout Designer

## CITIZEN SYSTEMS AMERICA CORPORATION

CITIZEN SYSTEMS AMERICA CORPORATION • 363 VAN NESS WAY SUITE 404 • TORRANCE CA 90501 / USA • Tel: (310) 781-1460 • Fax: (310) 781-9152 • www.citizen-systems.com