

# CITIZEN

## Top of the class

More features for reliable printing



**CT-S601II**  
(available in black or white)

## CITIZEN CT-S601II POS

### Applications

- Receipt
- Coupon
- Ticket
- Daily Report
- Kitchen management
- Delivery slip



Operation panel



Snap-in cutter

### LED operation panel

The three color LED indicates the printer's status, types of errors and messages.

### Toolfree maintenance

Paper jam? No problem for the CT-S601II. One hand grip and the cutter is released automatically. No tool is needed. Even if the longlife cutter ever needs to be exchanged. Thanks to it's Snap-In design this only takes 30 seconds.

### Internal Power Supply

The CT-S601II POS printer from Citizen offers an internal power supply.

# CITIZEN

## Accessories/ Interface Connections

- Serial IF1-RS01
- Parallel IF1-PA01
- USB IF1-UB01
- Ethernet (Standard) IF1-ET01
- Powered USB IF1-PU01

## Specifications

| Model                    | CT-S60111   |
|--------------------------|---|
| Printing method          | Line thermal dot printing   |
| Printing width           | 280mm/640 dots, 72mm/576 dots, 64mm/512 dots, 54.5mm/436 dots, 54mm/432 dots, 52.5mm/420 dots, 48mm/384 dots, 45mm/360 dots, 48.75mm/390 dots, 69.25mm/546 dots   |
| Dot pitch                | 8 x 8 dots/mm (203 dpi)   |
| Printing speed           | Max. 220mm/s (print density 100%), 1600 dot-lines/s   |
| Number of columns        | 83mm paper: Font A – 53, Font B – 71, Font C – 80, 80mm paper: Font A – 48, Font B – 64, Font C – 72, 60mm paper: Font A – 36, Font B – 48, Font C – 54, 58mm paper: Font A – 35, Font B – 46, Font C – 52              |
| Character size           | Font A: 1.50 x 3.00mm (12 x 24 dots), Font B: 1.13 x 2.13mm (9 x 17 dots), Font C: 1.00 x 2.00mm (8 x 16 dots)  |
| Character table          | Alphanumeric, international, PC437/850/852/857/863/860/863/864/865/866/WPC1252/katakana/Thai code 18  |
| Barcode type             | UPC-A/E, JAN-A/38, Code 93, Code 128, CODABAR, Code 93, PDF417, QR Code   |
| Logo registration/print  | 384 KB (capable of storing user-defined characters and logos)   |
| Line spacing             | 4.23mm (1/6 inch), can be set by command  |
| Paper                    | Width   |
|                          | Diameter  |
|                          | Thickness   |
| Recommended Paper        | TF-50KS-E-2D from Nippon Paper, PD150R or PD160R from Ohji Paper, PA220AG, HP220A, HP220AB-1, F230AA, P220AB, or PB670 (2-color paper) from Mitsubishi Paper  |
| Interface                | Serial (RS-232C compliant), parallel (IEEE 1284 compliant), USB, USB with hub, Ethernet, Wireless LAN (Wifi), powered USB, Bluetooth  |
| Input buffer             | 4K bytes/45 bytes   |
| Drawer kick-out          | 2 drawers   |
| Operation panel          | 3 LED's, Feed button  |
| Power supply             | Input: AC 100 to 240V, 50/60 Hz, 150 VA, Output: DC 24, 2.1 A   |
| Weight                   | CT-S60111S: Approx. 2 kg, CT-S60111A: Approx. 1.6 kg  |
| Dimensions (W x D x H)   | CT-S60111S: 145 x 192 x 148 mm, CT-S60111A: 145 (W) x 192 (D) x 120 (H) mm  |
| Operating environment    | 5 to 45°C, 10 to 90% RH (no condensation)   |
| Storage environment      | -20 to 60°C, 10 to 90% RH (no condensation)   |
| Reliability              | Print head life: 150km, 200 million pulses (at normal temperature and humidity using recommended paper), Auto cutter life: 2 million cuts (at normal temperature/humidity, using recommended paper and paper thickness) |
| EMC and safety standards | UL, C-UL, FCC Class A, TUV-Bauart, CE Marking, VCCI, CCC, BIS   |
| Warranty                 | 2 years for Printer   |

All product names are trademarks of the respective manufacturers, Epson® and ESC/POS™ are trademarks or registered trademarks of Seiko Epson Corporation. Designs, specifications and availability are subject to change without notice. Errors and omissions excluded.

### Type Classification

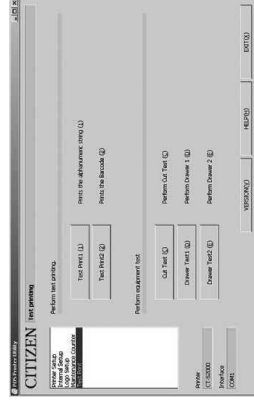
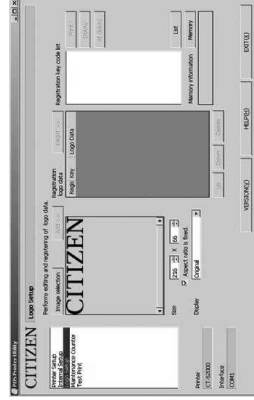
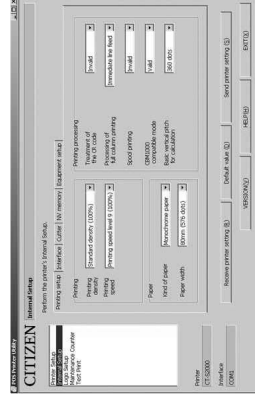
CT-S60111S 3 RS E BK P  
1) 2) 3) 4) 5) 6) 7)

- 1) Model type  
CT-S60111
- 2) Power supply  
DC: No power source  
S: Built-in power supply type  
A: AC adapter type
- 3) Paper width  
3: 3 inch (80/83 mm)  
2: 2 inch (58/60 mm)
- 4) Interface  
PA: Parallel  
RS: Serial RS-232C  
UB: USB only  
UH: USB with hub  
BT: iOS & Android / Bluetooth
- 5) Market:  
J: Japanese  
E: Europe/Asia  
U: North America  
C: China
- 6) Body case color  
WH: White  
BK: Black  
GR: Gray
- 7) PNE sensor  
No  
P: PNE sensor



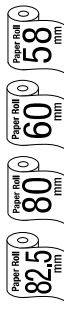
Exchangeable interfaces

## Customization Software



# CITIZEN CT-S60111

## POS



## Features & Benefits

- 220mm / sec high-speed printing
- 82.5/80/60/58 mm selectable paper width
- Easy paper loading
- Auto retracting Cutter (full/partial)
- Snap-in cutter
- Operation panel with 3 LED's and feed button
- Built-in buzzer
- Top paper exit
- Paper roll capacity Ø 83mm
- Exchangeable interface cards
- Built-in AC adaptor
- Cash drawer kick-out
- Bitmap registration (NV memory)
- Barcode printing
- ESC/POS compatibility
- Page mode
- Two color printing
- Smoothing fonts
- Available in white, black or dark grey (option)
- Driver: Win2000/XP/Vista/2003 Server, OPOS, Java POS, CUPS
- Utility software: Printer customization software, Receipt Layout Designer